

## citylink.com.au

Going online is the quickest and most convenient way to:

- Amend account and payment details;
- Add and remove vehicles from your account;
- View statements and trip details;
- Top up account/pay account invoice;
- View live traffic conditions through webcams; and
- Use the toll calculator to calculate your trip charge.

Telephone: **13 26 29** (24 hours a day, 7 days a week)

Email: [assist@citylink.com.au](mailto:assist@citylink.com.au)

Commercial and Taxi accounts

Telephone: **1300 360 962** (8am – 6pm, Monday to Friday)

Email: [comcare@citylink.com.au](mailto:comcare@citylink.com.au)

### CityLink Customer Centre

67 Lorimer Street, Docklands 3008 (Melway: 2E G10)

8am – 6pm Monday to Friday

9am – 5pm Saturday

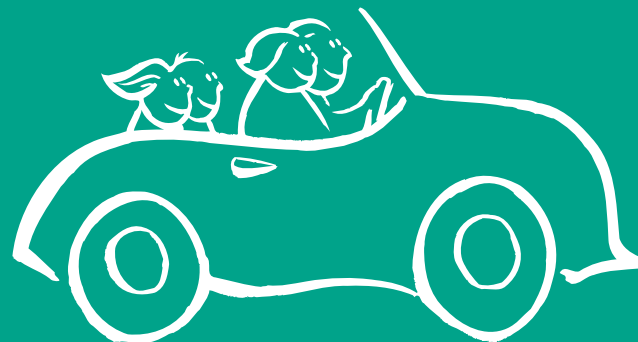
Closed Sundays and Public Holidays

TTY service for hearing impaired: 1300 134 132

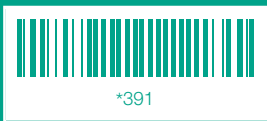
Interpreter service: 13 14 50



## Melbourne's fully electronic tollway



No cash booths  
Gets you there quicker



## Prices and information

1 January – 31 March 2010

## Welcome to CityLink

CityLink is the 22 kilometre tollway that makes getting around Melbourne quick and easy. Just look for the blue and yellow signs.

### The benefits of CityLink

- quick and easy travel around Melbourne
- no stopping to pay tolls
- gets you where you want to go

### How to pay for CityLink tolls

There are no cash booths, so to pay the tolls you can either:

- buy a pass before you travel or up to midnight 3\* days after you travel
- open an account before you travel

To avoid a Late Toll invoice or an infringement notice you do need a pass, tag or account.

\* Excludes Melbourne Pass. Please refer to the Pass and Account table for more information.

### To buy a pass or open an account:

- visit [citylink.com.au](http://citylink.com.au)
- call 13 26 29 (24 hours, 7 days a week)
- visit the CityLink Customer Centre

### More options for buying a pass across Victoria:

- participating newsagents
- Australia Post outlets

## Special tips for visitors

### Rental cars

If you're hiring a vehicle in Melbourne, you can buy a Rental Link-Up Pass from the rental car company. For each day you are renting, you can pay an additional charge and have unlimited use on CityLink. A Rental Link-Up Pass only covers trips made on CityLink.

### Visiting Melbourne

If you're visiting Melbourne for a short period of time, you can buy a Melbourne Pass and travel on all Victorian tollways (CityLink and EastLink).

### Travelling by taxi

Taxi passengers are required to pay the tolls to the driver in addition to the fare shown on the taxi meter. Tolls for CityLink and EastLink are shown on taxi toll stickers. Stickers can be found on the inside of each taxi. Please ask your driver.

### Interstate roaming

You can use your e-TAG® device on all tollways in New South Wales, Queensland and on EastLink in Victoria.

- In Victoria, you can be in any lane to use your e-TAG and you don't need to slow down when you are approaching a toll point.
- If your tag doesn't beep when you pass under a toll point, you need to call your toll road operator immediately to avoid the possibility of a fine.
- If you have purchased a Pass product from CityLink or another toll road operator, remove your e-TAG so tolls aren't charged to your account.

**Please note:** Please allow time for charges to appear on your CityLink statement/invoice. Charges incurred while travelling on other toll roads are not always processed to your CityLink account immediately.

## Where CityLink takes you

### Attraction

Victorian goldfields  
Melbourne Zoo, Flemington Racecourse  
Telstra Dome, Docklands, Victoria Market  
Melbourne Central  
Geelong, Great Ocean Road, Bellarine Peninsula  
Southbank  
Crown, St Kilda, Spirit of Tasmania  
The MCG, Melbourne Park or Olympic Park  
Phillip Island  
Essendon Direct Factory Outlet (DFO)



### Exit

Tullamarine Freeway  
Racecourse Road  
Footscray Road  
Footscray Road  
West Gate Freeway  
Power Street (via West Gate Freeway)  
Kings Way (via West Gate Freeway)  
Punt Road  
Monash Freeway  
Bulla Road

# CityLink pass prices (GST inc.)

	Car*	Light commercial	Heavy commercial
24 Hour Pass	\$12.55	\$20.10	\$23.90
Tulla Pass	\$4.45	\$7.15	na
Weekend Pass	\$12.55	\$20.10	na
Melbourne Pass	Account opening fee: \$5.50. You will be charged tolls plus vehicle matching fee for a single trip in one direction of any length from the applicable toll road.		

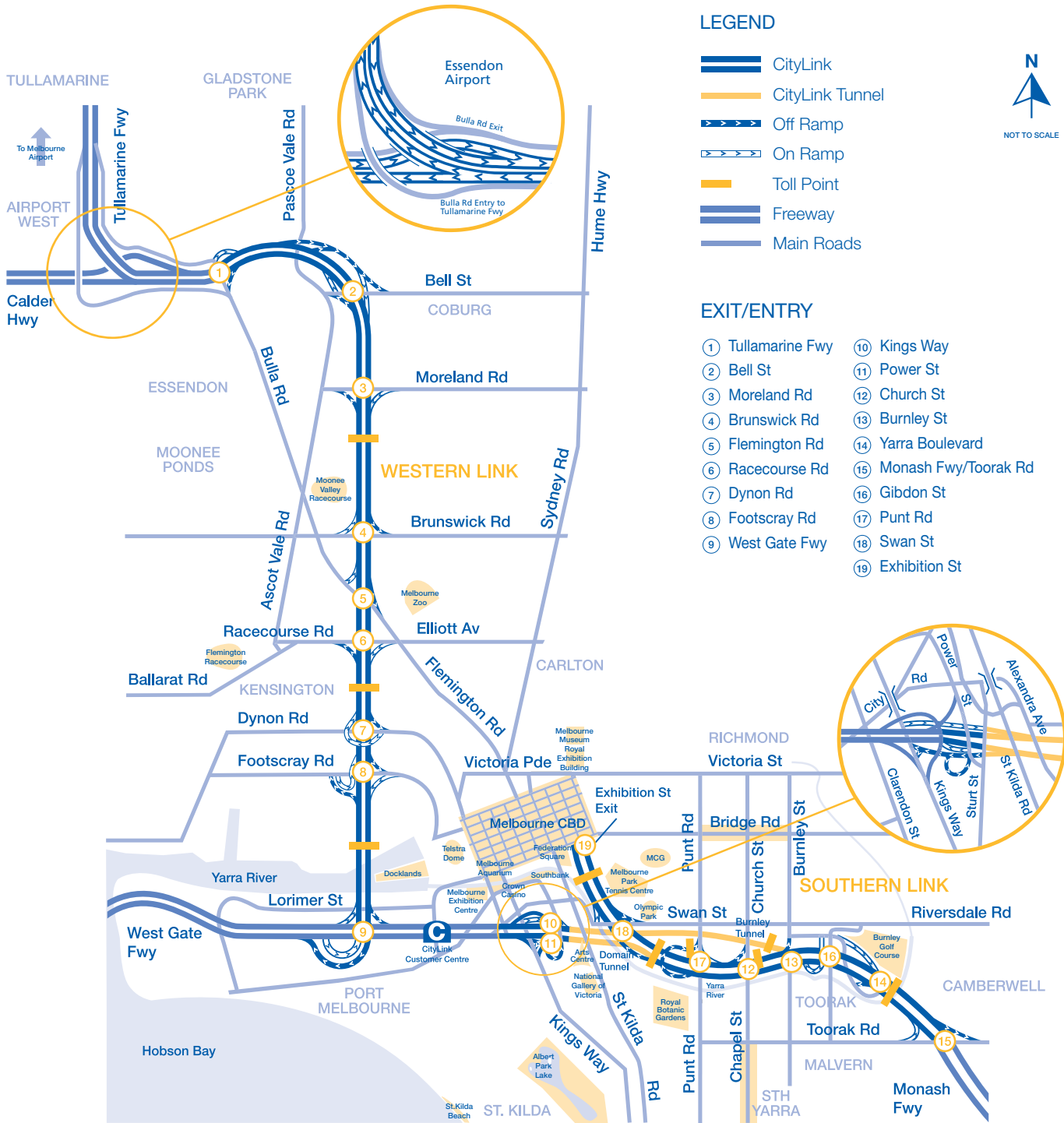
\* To check your vehicle classification see descriptions on page 7.

## Pass and account information

	ideal for...	period of travel	Roads covered	buy/open in advance	buy after travel?	e-TAG provided?	
passes	24 Hour	one off travel or multiple trips in one day	unlimited use for 24 hours from first trip	all of CityLink only	yes	yes, up to 3 days from first trip	no
	Weekend	one off travel or multiple trips for a weekend in Melbourne	unlimited use from midday Friday to midnight Sunday	all of CityLink only	yes	yes, up to midnight Tuesday after travel	no
	Tulla	one off travel or multiple trips for the airport run from Flemington Road	unlimited use for 24 hours from first trip	CityLink only, between Bulla & Flemington Roads only	yes	yes, up to 3 days from first trip	no
	Melbourne	visiting Melbourne for less than 30 days and wish to travel on CityLink and/or EastLink	up to 30 days can be extended	CityLink and EastLink. You will be charged tolls plus vehicle matching fee for each trip from the applicable toll road.	yes	yes, up to 2 days from first trip	no
accounts	Access	occasional travel – and to protect against fines – for 1 to 4 vehicles	unlimited use	CityLink and EastLink. You will be charged tolls plus vehicle matching fee for each trip from the applicable toll road.	yes	no	no
	Everyday	regular travel for 1 to 4 vehicles	unlimited use	all toll roads	yes	no	yes
	Commercial	business travel for 4 or more vehicles	unlimited use	all toll roads	yes	no	yes

## Don't forget

- You can purchase up to 12 CityLink Passes per vehicle per year (a combination of 24 Hour, Weekend or Tulla Pass).
- You can purchase as many Melbourne Passes per vehicle per year; there are no restrictions.
- If you have an e-TAG account, you can still buy up to 12 CityLink Passes per year. If you buy a pass from any toll road operator, you should remove your e-TAG so tolls aren't also charged to your account.
- On a long weekend you may need a 24 Hour Pass for Friday morning or Monday as well as a Weekend Pass.
- You can change details for a CityLink Pass up to 10pm the day before your nominated travel day or up to 10am Friday for a Weekend Pass.
- Access and Melbourne Pass customers: \$0.75 vehicle matching fee is added to the toll for each trip on CityLink. Please refer to the CityLink website for any changes to fees. Please contact EastLink for EastLink's tolls and fees.



**LEGEND**

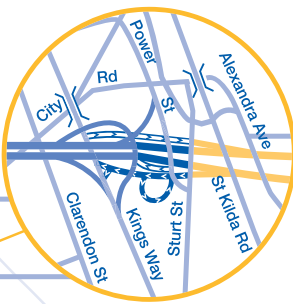
- CityLink
- CityLink Tunnel
- Off Ramp
- On Ramp
- Toll Point
- Freeway
- Main Roads



NOT TO SCALE

**EXIT/ENTRY**

- |                   |                        |
|-------------------|------------------------|
| ① Tullamarine Fwy | ⑩ Kings Way            |
| ② Bell St         | ⑪ Power St             |
| ③ Moreland Rd     | ⑫ Church St            |
| ④ Brunswick Rd    | ⑬ Burnley St           |
| ⑤ Flemington Rd   | ⑭ Yarra Boulevard      |
| ⑥ Racecourse Rd   | ⑮ Monash Fwy/Toorak Rd |
| ⑦ Dynon Rd        | ⑯ Gibdon St            |
| ⑧ Footscray Rd    | ⑰ Punt Rd              |
| ⑨ West Gate Fwy   | ⑱ Swan St              |
|                   | ⑲ Exhibition St        |



# CityLink toll prices (GST inc.)

## Travelling south-east from Essendon via the City to Malvern

ENTER \ EXIT	Brunswick Rd/ Flemington Rd	Dynon Rd/ Footscray Rd	Boile Bridge/ West Gate Fwy/ Kings Way/ Power St	Church St	Burnley St	Monash Fwy/ Toorak Rd
<b>Tullamarine Fwy/Bell St/ Moreland Rd</b>	\$1.73 \$2.78 \$3.30	\$3.46 \$5.56 \$6.60 day \$6.52 night	\$5.63 \$8.68 day \$6.52 night			
<b>Racecourse Rd</b>		\$1.73 \$2.78 \$3.30	\$3.90 \$6.26 \$7.43 day \$6.52 night			
<b>Footscray Rd</b>			\$2.17 \$3.48 \$4.13		\$6.07 \$8.68 day \$6.52 night	
<b>Burnley Tunnel/ West Gate Fwy/ Kings Way/ Power St</b>					\$3.90 \$6.25 \$7.43 day \$6.52 night	\$5.63 \$8.68 day \$6.52 night
<b>Exhibition St Extension</b>				\$2.18 \$3.46 \$4.12	\$3.91 \$6.24 \$7.42 day \$6.52 night	\$5.64 \$8.68 day \$6.52 night
<b>Swan St</b>				\$1.09 \$1.73 \$2.06	\$2.82 \$4.51 \$5.36	\$4.55 \$7.29 day \$6.52 day \$8.66 day \$6.52 night
<b>Punt Rd</b>					\$1.73 \$2.78 \$3.30	\$3.46 \$5.56 \$6.60 day \$6.52 night
<b>Burnley St/ Yarra Boulevard</b>						\$1.73 \$2.78 \$3.30

**Trip cap**

\$6.52  
 \$8.68 day  
 \$6.52 night

### To check the price of a trip:

1 Locate your entry point on the left hand side of the price grid (see shaded example: Exhibition Street Extension).

2 Follow the horizontal line of the entry point to your exit point (see shaded example: Church Street).

(Refer to the map on the back for more details about entry and exit points.)

toll prices

Motorcycles currently do not pay for tolls on CityLink

Day = between 6am and 8pm  
 Night = between 8pm and 6am

Access and Melbourne Pass customers: \$0.75 vehicle matching fee is added to the toll for each trip on CityLink. Please refer to the CityLink website for any changes to fees. Please contact EastLink for EastLink's tolls and fees.

Tolls are set in accordance with the Toll Calculation Schedule. The full details appear in the Victoria Government Gazette ([www.gazette.vic.gov.au](http://www.gazette.vic.gov.au)).

# Travelling north-west from Malvern via the City to Essendon

	ENTER							EXIT			
	Burnley St/ Yarra Boulevard	Punt Rd	Swan St	Exhibition St Extension	Domain Tunnel/ West Gate Fwy/ Kings Way/ Power St/	Footscray Rd	Racecourse Rd	Tullamarine Fwy/ Bell St/ Moreland Rd/			
Monash Fwy/ Toorak Rd	\$1.73 \$2.78 \$3.30	\$3.46 \$5.56 \$6.60 day \$6.52 night	\$4.55 \$7.29 day \$6.52 night \$8.66 day \$6.52 night	\$5.64 \$8.68 day \$6.52 night	\$5.63 \$8.68 day \$6.52 night	<b>Trip cap</b> \$6.52 \$8.68 day \$6.52 night					
Gibdon St		\$1.73 \$2.78 \$3.30	\$2.82 \$4.51 \$5.36	\$3.91 \$6.24 \$7.42 day \$6.52 night	\$3.90 \$6.26 \$7.43 day \$6.52 night	\$6.07 \$8.68 day \$6.52 night					
Swan St				\$1.09 \$1.73 \$2.06							
Bolte Bridge/ West Gate Fwy/ Kings Way/ Power St						\$2.17 \$3.48 \$4.13	\$3.90 \$6.26 \$7.43 day \$6.52 night	\$5.63 \$8.68 day \$6.52 night			
Dynon Rd/ Footscray Rd		toll prices					\$1.73 \$2.78 \$3.30	\$3.46 \$5.56 \$6.60 day \$6.52 night			
Brunswick Rd/ Flemington Rd								\$1.73 \$2.78 \$3.30			

Motorcycles currently do not pay for tolls on CityLink

CityLink pass and toll prices vary depending on the class of vehicle you drive:

- CAR:** includes cars towing a trailer or caravan
- LCV:** any cab chassis 1.5–4.5 tonne GVM, two axles
- HCV:** includes rigid trucks with three or more axles or over 4.5 tonnes GVM; buses with 13 or more seats including driver; articulated trucks.

**Trip cap** Although tolls apply to each section of the road used, a trip cap applies for a single continuous trip using more than three CityLink toll sections. These trip caps have been included in the pricing.

Access and Melbourne Pass customers: \$0.75 vehicle matching fee is added to the toll for each trip on CityLink. Please refer to the CityLink website for any changes to fees. Please contact EastLink for EastLink's tolls and fees.